

GIGA X3 Professional

Mudar o filtro

Material necessário:
 cartucho do filtro CLARIS Pro Blue
 Saqueta de 4 unidades (Art. 69670)



Este manual breve não substitui o "Manual de instruções GIGA X3 Professional". Primeiro, leia e respeite as instruções de segurança e advertências para evitar perigos.

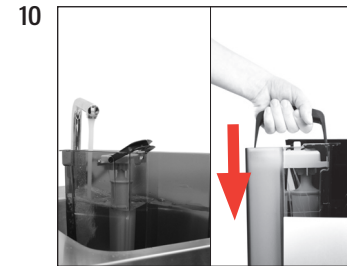
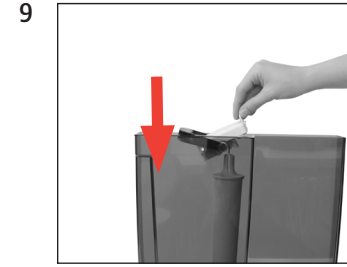
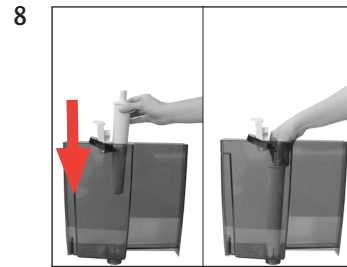
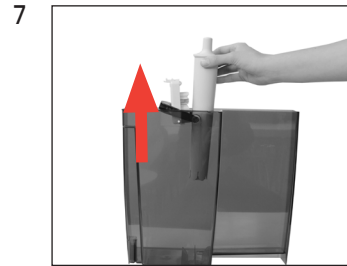
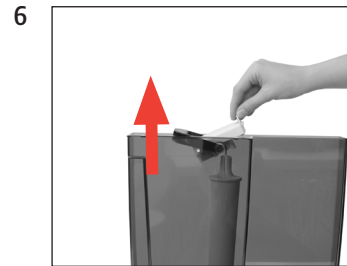
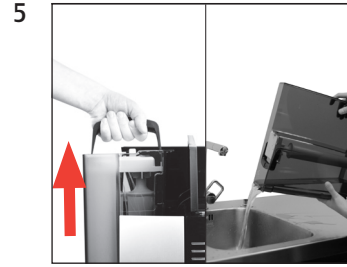
Pré-requisito: »Mudança do filtro«



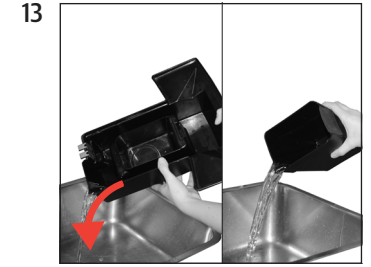
»Estado de manutenção (1/5)«



»Mudar o filtro.« / »Pulsar o Rotary Switch.«



»Filtro é lavado.«
 »Esvaziar bandeja de recolha de água.«



»Mudança do filtro« / »O filtro foi lavado com sucesso.«
 »Por favor, selecione o seu produto:«